



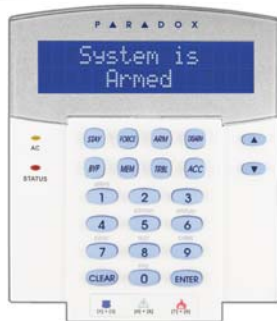
DIGI PLEX EVO

EVO48
EVO192

User Guide

Smartway

SECURITY & TECHNOLOGIES



We hope this product performs to your complete satisfaction. Should you have any questions or comments, please visit www.paradox.com and send us your comments.

P **▲** **R** **▲** **D** **O** **X**[®]
S E C U R I T Y S Y S T E M S

Table of Contents

Introduction	2	How Access Control Works	18
Legend	2	Trouble Display	19
Basic Operation	3	Trouble Display	19
Confidential Mode	4	Event Record Display	20
MG-REM2 Feedback	5	Additional Features	21
Full/Force Arming Indicators	5	Programmable Outputs (PGMs)	21
Stay/Sleep Arming Indicators	5	Keypad Settings	21
Other Indicators	5	Modifying illumination settings on the DGP2-648BL LED 21	
Partitioned System	6	Setting Time & Date	21
Area Display	6	Programming Chime Zones	22
Arming	7	Panic Alarms	22
Exit Delay Timer	7	Quick Function Buttons	22
Regular Arming	7	VDMP3 Plug-In Voice Dialer	23
Stay Arming	7	Calling the VDMP3 (outside line)	23
Instant Arming	7	Receiving a Call From the VDMP3 (alarm in system) 23	
Force Arming	7	Testing and Maintenance	25
Bypass Programming	7	Burglar Alarm Testing	25
Keyswitch Arming	8	Fire Alarm Testing	25
Auto-Arming	9	System Maintenance	25
Disarming	10	System Test	25
Entry Delay Timer	10	Fire and Burglar Alarms	26
Disarming an Armed System	10	Standard Fire Zone	26
Alarm Memory Display	10	Delayed Fire Zone	26
Access Codes	11	Fire Safety Tips	26
System Master Code (Default 123456)	11	Minimizing Home Fire Hazards	27
Copy User Options	11	Home Fire Warning System	27
User Labels	11	Burglar Alarm	27
Deleting User Access Codes	13	Appendix 1: Hebrew Special Characters	28
Programming User Access Codes	13	Appendix 2: Russian Special Characters	29
User Options	15	Appendix 3: Greek Special Characters	30
Access Control User Options	15	Index	31
Using Access Control	17		
Entering & Exiting	17		
Arming and Disarming with Card	17		

1.0 Introduction

Your EVO System is an advanced technology security system that will provide you with reliable security protection and powerful features that are easy to use. The elegant and user-friendly keypads will allow you easy access to your security system's functions and information at the touch of a button.

Messages will be displayed differently depending on the keypad you have selected. The 32-character screen on LCD keypads will display messages and menus to guide you through the system's operations. Your installer can even customize the messages on LCD keypads for your home or business. The LED display of the DGP2-648BL will let you assess the system status at a glance.

Since you will communicate your instructions to your system through the keypad, please read this manual carefully and have your installer explain basic system operation.

1.1 Legend



Indicates a warning or an important note.



Indicates useful information or a tip.

[TEXT] *Indicates information that must be entered on the keypad.*

LCD

Indicates an LCD Keypad instruction or information.



LED

Indicates a DGP2-648BL instruction or information.



2.0 Basic Operation

The following sections will introduce you to the functions of the buttons, lights, and messages on your keypad.

Figure 1: LCD Keypad Basic Overview

AC Light:

ON = AC power
OFF = Power failure

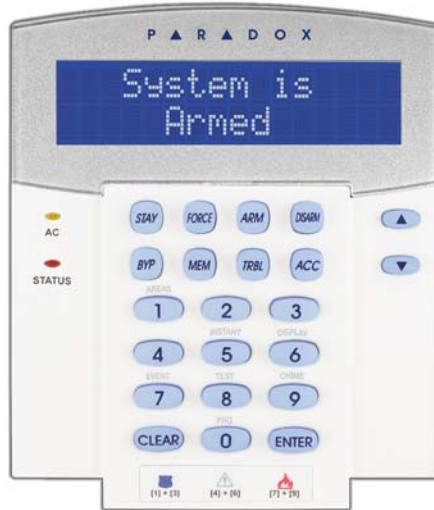
STATUS Light:

When Green:

ON = All zones are closed.
OFF = One or more zones are open.
FLASH = Exit Delay in progress

When Red:

ON = Area(s) armed
OFF = Area(s) disarmed



The LCD screen will guide you with detailed messages.

Use the arrow buttons to scroll through the current menu when the arrows appear in the LCD screen.

Figure 2: DGP2-648BL LED Keypad Overview

AC Light:

ON = AC Power (OK)
OFF = Power failure

AREA Lights: (A1, A2, A3 and A4)

ON = Area armed
OFF = Area disarmed
FLASH = Area in alarm

STATUS Light:

When green:

ON = All zones closed
OFF = One or more zones are open
FLASH = Exit Delay in progress

When red:

ON = Area(s) armed
OFF = Area(s) disarmed
FLASH = System in Alarm



ACTION Lights: (Access, Stay, Force, Byp, Mem, Trbl and Prg) Lights will illuminate according to the status of the system.

Numerical Lights: (Zones)

ON = Zone is open
OFF = Zone is closed (OK)
FLASHES = Zone / fire loop

The keypad will display the status of all its assigned areas.



For all keypads, the **[ENTER]** key will save and exit, and the **[CLEAR]** key will exit without saving. **[ENTER]** and **[CLEAR]** represent the LCD/LED keypads' enter and clear keys unless both keys are shown to have a different function.

2.1 Auditory Feedback (Beep Tones)

When you enter information on the keypad, the keypad will guide you with beep tones to communicate the acceptance or rejection of your entries.

Confirmation Beep: When an operation (i.e. arming/disarming) is successfully entered or when the system switches to a new status/mode, the keypad emits an intermittent beep tone (“BEEP-BEEP-BEEP-BEEP-BEEP”).

Rejection Beep: When the system reverts to a previous status, or when an operation is incorrectly entered, the keypad emits a continuous beep tone (“BEEEEEEEEEEP”).

2.2 Confidential Mode

Your installer can program keypads to not display the status of your system automatically by changing the keypad to Confidential Mode.

In Confidential Mode:

- The zones and status messages will NOT be displayed
- The indicator lights will NOT illuminate
- Depending on how your keypad was programmed by your installer, you must either press a button or enter your user access code to illuminate the indicator lights and activate Normal Mode.

3.0 MG-REM2 Feedback

If your system includes the Wireless Zone Expansion module (MG-RTX3), it will be able to support the Two-Way Remote Control (MG-REM2). This remote allows you to change the status of the system, and it also provides visual and auditory feedback.

3.1 Full/Force Arming Indicators

Action	LED Sequence	Auditory Sequence
Disarming	Green on	Two beeps
Exit delay	Red / green slow flash	Confirmation beep
Arming / Entry Delay	Red on	Confirmation beep
Alarm	Red fast flash	Alarm beep

3.2 Stay/Sleep Arming Indicators

Action	LED Sequence	Auditory Sequence
Disarming	Green on	Two beeps
Exit delay	Yellow / green slow flash	Confirmation beep
Arming / Entry Delay	Yellow on	Confirmation beep
Alarm	Red fast flash	Alarm beep

3.3 Other Indicators

Action	LED Sequence	Auditory Sequence
PGM on/off	Yellow on	Confirmation beep

4.0 Partitioned System

Your installer can set your keypad to recognize separate protected areas. A separated system is called a partitioned system, which can be useful in situations where shared security systems are more practical. For example, a company that has both an office and a warehouse area, can arm and disarm each area separately while controlling access to each area. Therefore, one person may have access to only one area, whereas another person may have access to all areas. Access to the areas is determined by the User Access Code.

4.1 Area Display

The Area Status Display enables you to see the status of the individual areas within a partitioned system. Your installer can partition the system into separate areas.

To view the status of the areas:

1. Enter your **[ACCESS CODE]**, and then press the **[1]** button.
2. Press the button corresponding to the area (i.e. 1, 2,...8), or use the **[▲]** and **[▼]** buttons and press **[ENTER]** when the area you want to view appears on the screen.
3. Press **[CLEAR]** to exit.

LCD

In Area Status Display mode, the following information will scroll on the LCD screen:

- *READY*: if all zones in the selected area are closed.
- *NOT READY*: if zones in the selected area are open.
- *FRONT DOOR OPEN*: if there is an open zone within that area.
- *TROUBLE(S)*: (section 9.0 on page 19) if a trouble has occurred.
- *ALARMS IN MEMORY*: (section 6.3 on page 10) if an alarm has occurred.
- *ARMED; FORCE ARMED; INSTANT ARMED; STAY ARMED*: displays the arming status of the selected area.

LED

In Area Status Display, the following will illuminate for the area selected:

- The area lights (A1, A2, A3, and A4) if the associated area is armed. For example, if you have selected area 3 and it is currently armed, A3 will illuminate.
- The numerical light(s) representing any open zone(s) in a corresponding area or areas.
- The *MEM* action light if any alarms have occurred.
- The *TRBL* action light if any troubles are occurring.
- The *STAY* action light if the area is Stay or Instant Armed.
- The *FORCE* action light if the area is Force Armed.
- The *BYP* action light if zones are bypassed.

5.0 Arming

When your system is armed, it can respond to any breach in the protected zones by causing an alarm and sending a report to your monitoring station.

LCD LED

5.1 Exit Delay Timer

When you arm your system, it will trigger the Exit Delay Timer to provide you with enough time to exit the protected area before the system is armed.

LCD LED

5.2 Regular Arming

This method is used for the everyday arming of your system. All zones within the protected area must be closed to Regular arm the system.

To Regular arm the system:

1. Enter your [ACCESS CODE].
2. Press the [ARM] button.
3. If you have access to more than one area, select the area(s) you wish to Regular arm (refer to section 4.1 on page 6).

LCD LED

5.3 Stay Arming

Stay arming will partially arm your system to permit you to remain in your home or office by arming the outer zones (perimeter) of the protected area (i.e. doors and windows).

To Stay arm:

1. Enter your [ACCESS CODE].
2. Press the [STAY] button.
3. If you have access to more than one area, select the area(s) you wish to Stay arm (refer to section 4.1 on page 6).

LCD LED

5.4 Instant Arming

This feature is the same as Stay arming except that there is no Entry Delay. Therefore, any armed zone that is breached will immediately generate an alarm.

To Instant arm:

1. Enter your [ACCESS CODE].
2. Press the [5] button.
3. If you have access to more than one area, select the area(s) you wish to Instant arm (refer to section 4.1 on page 6).

LCD LED

5.5 Force Arming

Force arming allows you to quickly arm your system when zones are open. However, once the open zone is closed, your system will then arm that zone as well.

To Force arm:

1. Enter your [ACCESS CODE].
2. Press the [FORCE] button.
3. If you have access to more than one area, select the area(s) you wish to Force arm (refer to section 4.1 on page 6).

LCD LED

5.6 Bypass Programming

You can bypass certain zones when you arm the protected area(s). When a zone is bypassed, it will be ignored the next time your system is armed. Once your area is disarmed, the system will unbypass the zone.

To Bypass a zone:

1. Enter your [ACCESS CODE].
2. Press the [BYP] button.

3. Enter the zone number (i.e. 01, 02,...96), or use the [▲] and [▼] buttons and press [BYP] once the zone you want to bypass appears on the screen. If *BYPASSED*, the *byp* light does not appear on the screen and the keypad emits a rejection beep, you may not have access to bypass that zone.
4. Repeat step 3 until all zones you want to bypass have been selected.
5. Press the [ENTER] button to save and exit.

To view all bypassed zones.

1. Enter your [ACCESS CODE].
2. Press the [BYP] button.
3. Scroll through the zones using the [▲] and [▼] buttons to view zone status. (LCD Keypads)



In order to bypass a zone, the following conditions must be met:

- The zone must have the Bypass option programmed by your installer.
- The Bypass option must be enabled in your User Options.
- Your user access code must have access to the zone's Area Assignment.
- The zone's area must be disarmed before the zone can be bypassed.



Fire Zones cannot be bypassed.

5.6.1 Bypass Recall

Bypass Recall reinstates the zones that were bypassed the last time your system was armed.

To activate Bypass Recall:

1. Enter your [ACCESS CODE].
2. Press the [BYP] button.
3. Press the [MEM] button.

Zones bypassed the last time your system was armed are bypassed.

4. Press the [ENTER] button to save and exit.

LCD LED

5.6.2 One-Touch Buttons

If enabled by your installer, you can access the following features without using your user access code by pressing and holding the desired One-Touch button.

Table 1: One Touch Button

Button	Feature
[ARM]	Regular arm
[STAY]	Stay arm
[FORCE]	Force arm
[BYP]	Bypass Programming
[DISARM]	Disarm a Stay/Instant armed area
[5]	Instant arm
[6]	Change display settings
[7]	View Event Record display (LCD Keypads only)

LCD LED

5.7 Keyswitch Arming

A key can be used to arm and disarm your system using two forms of keyswitches. With a Maintained Keyswitch, place the key in the "ON" position to arm your system, and place the key in the "OFF" position to disarm your system. With a Momentary Keyswitch, place the key in the "ON" position briefly then place it back in the "OFF" position to arm the system. Repeat this process to disarm with a Momentary Keyswitch.

5.8 Auto-Arming

If enabled by your installer, you can set the time that an area will arm itself automatically.

5.8.1 Timed Auto-Arming

Your installer can set Timed Auto-Arming to function in either Force or Stay arming mode. A sixty-second (default value) Exit Delay sequence will begin prior to your system automatically arming itself at the programmed time.

To set the Auto-Arming timer:

1. Enter your **[ACCESS CODE]**.
2. Press the **[0]** button.
3. Press the **[MEM]** button.
4. If you have access to more than one area, press the area's number, or use the **[▲]** and **[▼]** buttons and press the **[ACC]** button when the area you want to program appears on the screen.
5. Enter the time you want the area to be armed according to the 24-hour clock (i.e. 9 a.m. is 09:00 and 9 p.m. is 21:00).
6. Press the **[ENTER]** button to save and exit.



If you are using the DGP2-648BL LED keypad, The MEM action light will flash if a time is not already programmed. The PRG action light, the area light of the chosen area, and the first number of the previous time set will illuminate (10 light = zero).

5.8.2 No Movement Auto-Arming

Your system can be programmed to send a report to your monitoring station and/or arm the system if there is no activity in the area during a specified period of time. Your installer can set No Movement Auto-Arming to function in either Regular or Stay arming mode.

6.0 Disarming

When your system is disarmed, it deactivates any alarms in progress, and it deactivates the zones so the alarm will not be triggered if zones are breached.

LCD LED

6.1 Entry Delay Timer

Your installer will program designated entry points (i.e. the front door) with an Entry Delay Timer. This delay gives you time to enter the armed premises and enter your code to disarm your system before the alarm is triggered.

LCD LED

6.2 Disarming an Armed System

You can only disarm an area to which your user access code is assigned. User access codes with the "Arm Only" (section 7.6 on page 15) option enabled cannot disarm an armed system.

How do I disarm the system?

1. Enter your **[ACCESS CODE]**.
2. Press the **[DISARM]** button. If you have access to more than one area, select the area(s) you wish to disarm (refer to section 6.2 on page 10).

To disarm a system in alarm:

1. Enter your **[ACCESS CODE]**.
2. In the case of a false alarm, call your monitoring station quickly to advise them of the false alarm.



In the case of a burglar alarm, leave the premises and call the Police from a safe location.

6.3 Alarm Memory Display

When an alarm occurs in a zone:

- The area and zone (i.e. Alarm Area 1 - Front Door) are displayed / zone's LED flashes even when the system is armed. The notification continues until disarming, even if the zone is restored. (EVO641 / EVO641R only)
- The alarm memory will be erased after the next alarm occurs and a valid code has been entered.

To view the alarms that occurred the last time the system was armed:

1. When the system is disarmed, the LCD keypad's screen will display *ALARM IN MEMORY: PRESS [MEM]*. The DGP2-648BL LED's *MEM* action light will illuminate.
2. Press the **[MEM]** button.

Each zone that was breached while armed will appear below *ALARM IN:*.

LCD

LED

The *MEM* action light will flash and the numerical light(s) for each zone whose alarm was triggered will illuminate.

3. Press the **[CLEAR]** button to exit the Alarm Memory Display.

7.0 Access Codes

Access Codes allow access to the system. Your system supports up to 999 user access codes. Codes are given a User Number between 002 and 999 (User Number 001 is the System Master Code). Your installer will program user access codes to be four, six, or variables of one to six digits in length. Each digit can be any value between zero and nine. If your installer programmed your system to accept a variable code length, you have to press the **[ENTER]** button after entering your user access code.

LCD LED

7.1 System Master Code (Default 123456)

The System Master Code will give you access to all the features available on your system, as well as the ability to add, modify, or delete any user access codes. We suggest that you change this code to prevent others from accessing and changing options without authorization. Your installer can set the System Master Code to be either 4 or 6 digits in length.

To change the System Master Code:

1. Enter the current **[SYSTEM MASTER CODE]** (default: 123456).
2. Press the **[0]** button.
3. Press the **[ACC]** button.
4. Enter the numbers **[0] [0]** and **[1]**.
5. Enter a **[NEW CODE]**.
6. Press the **[ENTER]** button to save and exit.



The System Master Code has access to all Access Control doors and all Access Control features at all times. Only the card's serial number and the choice of arming method can be changed. If the other options are manually changed, the System Master Code will immediately revert to its original programming.



You can assign a label (name) to a user access code at any point during the "Programming User Access Code" process. Refer to section 7.3 on page 11 to assign a User Label.

LCD

7.2 Copy User Options

This feature allows you to copy the User Options, Access Control Options, and Area Assignments from one user access code to another. All User Options are copied except the User Code, Card Assignment, and User Label.

To copy user options:

1. Enter your **[ACCESS CODE]** (System Master Code or user access code with Master feature).
2. Press the **[0]** button, and then the **[ACC]** button.
3. Enter the 3-digit User number you wish to copy TO.
4. Press the **[MEM]** button.
5. Enter the 3-digit User number you wish to copy FROM.
6. Enter a user code. If the user code is of variable length, press the **[ENTER]** button after entering the user code. If necessary, assign an Access card (step 13 in section 7.5.1 on page 14) and User Label (section 7.3 on page 11).
7. Press **[ENTER]** to save and exit.

LCD

7.3 User Labels

User labels personalize user access codes and can be assigned by pressing **[ENTER]** at any point after step 4 during the programming of user access codes (refer to section 7.5.1 on page 14). For Example, LCD keypads can display *JOHN SMITH SELECT ACTION*.

To program a user label:

1. At any point after step 4 in section 7.5.1 on page 14:
2. Press the **[ENTER]** button.
3. Type the desired characters as detailed in section 7.3.1 on page 12 and section 7.3.2 on page 12.

4. Press the **[▲]** button to move the cursor to a new space.
5. Repeat steps 2 and 3 until the desired label is complete.
6. Press the **[ENTER]** button to save and exit.

7.3.1 Keypad Buttons

Every numeric button on the LCD keypads is assigned a set of letters. To obtain the desired letter using the numeric buttons on your keypad, press the button until the desired letter appears on the screen. For example, if you wanted to enter the letter "C" you would press the **[1]** button three times (refer to Table 2 on page 12). If using a Hebrew keypad, refer to Table 6 in Appendix 1: Hebrew Special Characters on page 28. If using a Russian keypad, refer to Table 8 in Appendix 2: Russian Special Characters on page 29. If using a Greek keypad, refer to Table 10 in Appendix 3: Greek Special Characters on page 30.

Table 2: Keypad Letter Assignments

Key	Press Key Once	Press Key Twice	Press Key Three Times
[1]	A	B	C
[2]	D	E	F
[3]	G	H	I
[4]	J	K	L
[5]	M	N	O
[6]	P	Q	R
[7]	S	T	U
[8]	V	W	X
[9]	Y	Z	

7.3.2 Special Function Keys

[STAY] = Insert Space

Pressing the **[STAY]** key inserts a blank space in the current cursor position.

[FORCE] = Delete

Pressing the **[FORCE]** key will delete the character or blank space found at the current cursor position.

[ARM] = Delete Until the End

Pressing the **[ARM]** key will delete all characters and spaces to the right of the cursor and at the cursor's position.

[DISARM] = Numeric Keys / Alphanumeric Keys

Every time the **[DISARM]** key is pressed it will toggle from numeric keys to alphanumeric keys and vice versa. Numeric: Keys **[0]** to **[9]** represent numbers 0 to 9.

[BYP] = Lower Case / Upper Case

Every time the **[BYP]** key is pressed it will toggle the case setting from lower to upper case and vice versa.

[MEM] = Special Characters

After pressing the **[MEM]** key, the cursor will turn into a flashing black square. Using Table 3 on page 13, enter the 3-digit number that represents the desired symbol. If using a Hebrew keypad, see *Hebrew Special Characters Catalogue* on page 28. If using a Russian keypad, see *Russian Special Characters Catalogue* on page 29. If using a Greek keypad, see *Greek Special Characters Catalogue* on page 30.

Table 3: Special Characters Catalogue

032	048	064	080	096	112	128	144	160	176	192	208	224	240
	Ø	Ɔ	P	`	Ɔ	Ů	Ɔ	Ɔ	Ů	Ø	·	Ɔ	Ɔ
033	049	065	081	097	113	129	145	161	177	193	209	225	241
!	1	A	Q	a	Ɔ	Ů	Ɔ	Ů	±	Ɔ	∴	¼	Ɔ
034	050	066	082	098	114	130	146	162	178	194	210	226	242
"	2	B	R	b	Ɔ	Ů	Ɔ	Ů	ı	ı	Ɔ	½	Ɔ
035	051	067	083	099	115	131	147	163	179	195	211	227	243
#	3	C	S	c	s	Ů	Ɔ	Ů	ı	↑	Ɔ	¾	Ɔ
036	052	068	084	100	116	132	148	164	180	196	212	228	244
\$	4	D	T	d	t	Ů	Ɔ	Ů	ı	↓	Ɔ	¾	Ɔ
037	053	A069	085	101	117	133	149	165	181	197	213	229	245
%	5	E	U	e	u	Ů	Ɔ	Ů	ı	Ɔ	Ɔ	¾	Ɔ
038	054	070	086	102	118	134	150	166	182	198	214	230	246
&	6	F	V	f	v	Ů	Ɔ	Ů	Ɔ	Ɔ	Ɔ	Ɔ	Ɔ
039	055	071	087	103	119	135	151	167	183	199	215	231	247
'	7	G	W	g	w	Ů	Ɔ	Ů	Ɔ	Ɔ	Ɔ	Ɔ	Ɔ
040	056	072	088	104	120	136	152	168	184	200	216	232	248
<	8	H	X	h	x	Ů	Ɔ	Ů	Ɔ	Ɔ	Ɔ	Ɔ	Ɔ
041	057	073	089	105	121	137	153	169	185	201	217	233	249
>	9	I	Y	i	y	Ů	Ɔ	Ů	Ɔ	Ɔ	Ɔ	Ɔ	Ɔ
042	058	074	090	106	122	138	154	170	186	202	218	234	250
*	:	J	Z	j	z	Ů	Ɔ	Ů	Ɔ	Ɔ	Ɔ	Ɔ	Ɔ
043	059	075	091	107	123	139	155	171	187	203	219	235	251
+	;	K	L	k	Ɔ	Ů	Ɔ	Ů	Ɔ	Ɔ	Ɔ	Ɔ	Ɔ
044	060	076	092	108	124	140	156	172	188	204	220	236	252
,	<	L	/	l	l	Ů	Ɔ	Ů	Ɔ	Ɔ	Ɔ	Ɔ	Ɔ
045	061	077	093	109	125	141	157	173	189	205	221	237	253
-	=	M	J	m	Ɔ	Ů	Ɔ	Ů	Ɔ	Ɔ	Ɔ	Ɔ	Ɔ
046	062	078	094	110	126	142	158	174	190	206	222	238	254
.	>	N	^	n	→	Ů	Ɔ	Ů	Ɔ	Ɔ	Ɔ	Ɔ	Ɔ
047	063	079	095	111	127	143	159	175	191	207	223	239	255
/	?	O	-	o	←	Ů	Ɔ	Ů	Ɔ	Ɔ	Ɔ	Ɔ	Ɔ

Polish	001	002	003	004	005	006	007
	ż	ć	ą	ę	ź	ł	ś
Hungarian	001	002	003				
	Á	ű	ő				
Turkish	001						
	ü						

LCD LED

7.4 Deleting User Access Codes

To delete user access codes, follow steps 1 to 4 in section 7.5.1 on page 14, but press the [CLEAR] button in Step 4. Once the information is erased, press the [ENTER] button to save and exit.

LCD LED

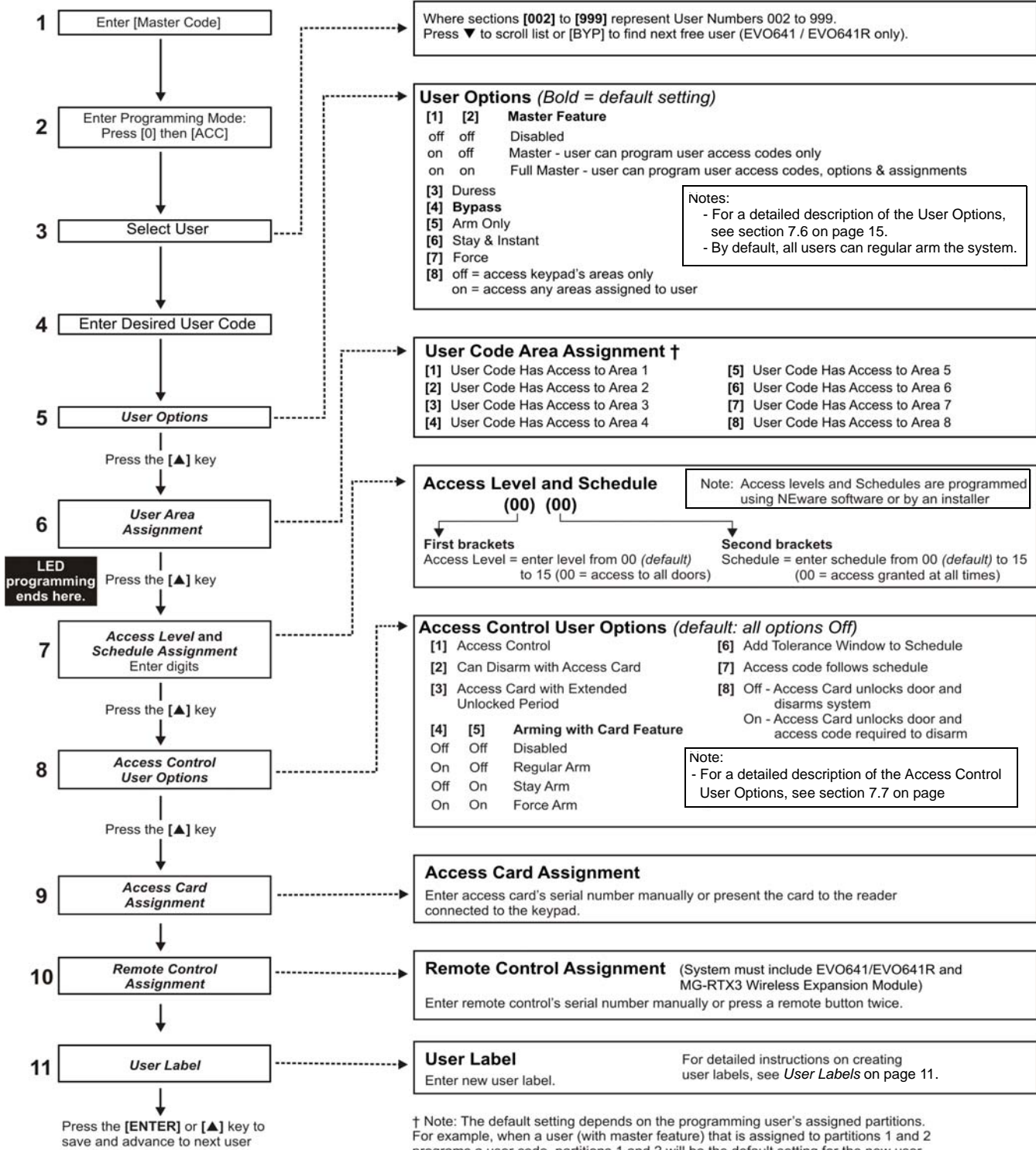
7.5 Programming User Access Codes

The System Master and Users with the Master feature can program user access codes with User Options and Area Assignments. The section 7.5.1 on page 14 describes the steps you would follow to program user access codes. If you wish to program user access codes using the NEware Software, please contact your installer for information.

If the keypad emits a rejection beep at any point during the programming procedure, you may have chosen an existing user code or you do not have access to certain User Options (section 7.6) and Area Assignments (step 7 in section 7.5.1 on page 14). Users with the Master feature can only assign User Options and Area Assignments that they are assigned to. For example, if a User with the Master feature is assigned User Option 1 and Area 2, they can only assign Option 1 and Area 2 to a user access code.

7.5.1 Programming User Settings

Note: Each option is considered ON when the number appears withing the brackets



† Note: The default setting depends on the programming user's assigned partitions. For example, when a user (with master feature) that is assigned to partitions 1 and 2 programs a user code, partitions 1 and 2 will be the default setting for the new user.

NOTE: If no area is assigned, and if PGMs are programmed by your installer, the user can only control the PGMs. Refer to section 10.1 on page 21 for a more detailed explanation of PGMs.

7.6 User Options

Options [1] and [2]: Master Feature

When option [1] is **OFF**, the User cannot program other users into the system.

When option [1] is **ON** and option [2] is **OFF**, the user can program and modify user access codes (P.I.N. only) and User Labels.

When both options [1] and [2] are **ON**, the user has Full Master rights. The user can create or modify user access codes, User Options, User Access Control Options, Access Card Numbers, User Labels and Area Assignments according to their own programming. For example, if the Full Master User has access to area #1 and option [4] (Bypass) only, the Full Master user can only assign area #1 and option [4] to other users in the system.

Option [3]: Duress

When option [3] is **ON**, the Duress feature is enabled. This feature is used when someone forces a user to arm or disarm an area(s). By entering a user access code (P.I.N.) reserved for the Duress feature, the system will arm or disarm the area(s), and then send a silent alarm to the monitoring station.

Option [4]: Bypass

When option [4] is **ON**, the Bypass feature is enabled. This feature allows the user to deactivate zones when arming the area(s).

Option [5]: Arm Only

When option [5] is **ON**, the Arm Only feature is enabled. The user can arm assigned areas with either a card or code, but cannot disarm. When the option is **OFF**, the user can either arm or disarm assigned areas.

Option [6]: Stay & Instant Arm

When option [6] is **ON**, the Stay and Instant arm features are enabled. The user can now Stay or Instant arm their assigned areas.

Option [7]: Force Arm

When option [7] is **ON**, the Force arm feature is enabled. The user can now Force arm their assigned areas.

Option [8]: Area Access

When option [8] is **ON**, the keypad will permit access to all the areas assigned to the user access code. When option [8] is **OFF**, the keypad will only permit access to the areas it controls. For example, the keypad is assigned area 1 only, and your user access code is assigned areas 1 to 8. If the option is **ON**, you can access all eight areas from the keypad. If the option is **OFF**, you can only access area 1.



By default all users can Regular arm the system.

7.7 Access Control User Options

Option [1]: Access Control

When option [1] is **ON**, the user can gain access to an access control door when Access Control is enabled in the system. A user that is not assigned to any partition, but has the Access Control option (Option [1]) enabled, can now gain access to an access control door by entering a code # (P.I.N.) and then pressing the **[ACC]** keypad key. When the option is **OFF**, the user cannot access an Access Control door.

Option [2]: Can Disarm with Access Card

When option [2] is **ON**, a User's Access Control card can unlock and disarm an armed Access Control door. When option [2] is **OFF**, follow the settings in option [8] on page 17.



For option [2] to function in the ON position, option [5] "Arm Only" in the User Options must be disabled (refer to section 7.6 on page 15).

Option [3]: Card with Extended Unlocked Period

When option [3] is **ON**, “Extended Unlocked Period” is enabled. “Extended Unlocked Period” refers to the time period programmed into each Access Control door by your installer that extends the unlocked time of the door. For example, if your installer sets the Unlocked period of the door to 30 seconds and the Extended Unlocked Period to 15 seconds, a user access code with “Extended Unlocked Period” enabled will have a total of 45 seconds to pass through the door.

Options [4] and [5]: Arming with Card

Options [4] and [5] define the type of arming when arming with an Access Control card (refer to section 8.2.1 on page 17). You can either Regular arm, Stay arm, Force arm, or Disable the Arming with Card feature.

[4] **ON**, [5] **OFF** = Regular Arm

[4] **OFF**, [5] **ON** = Stay Arm

[4] and [5] **ON** = Force Arm

[4] and [5] **OFF** = Disable the Arming with Card feature

Option [6]: Add Tolerance Window to Schedule

When option [6] is **ON**, the Schedule Tolerance Window feature is enabled. This feature extends a user’s scheduled access period through an Access Control door by the amount programmed by your installer. For example, if the user’s assigned schedule for the door is Monday to Friday from 9:00 a.m. to 5:00 p.m., and your installer sets the “Tolerance Window” at one hour, the user with the “Schedule Tolerance Window” enabled will be able to enter and exit one hour before and after their scheduled time for that door.

Option [7]: Code Follows Schedule

When option [7] is **ON**, users can use their access codes only during their scheduled hours assigned in step 8 in section 7.5.1 on page 14. When the option is **OFF**, users can use their access codes at any time.

Option [8]: Card to Unlock and Code to Disarm

Option [8] functions only if option [2] in section 7.7 is **OFF**. When option [8] is **ON**, a user can use an Access Control card to unlock an armed Access Control door, however the user **must** enter a user access code to disarm the armed area. When option [8] is **OFF**, a user can gain access to an Access Control door only if the door’s area(s) is already disarmed.



For option [8] to function in the ON position, option [5] “Arm Only” in the User Options must be disabled (refer to section 7.6 on page 15).

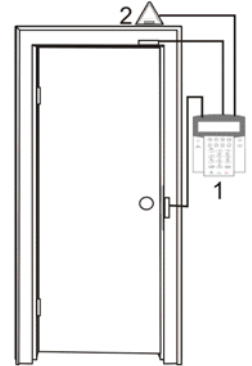
8.0 Using Access Control

LCD LED

8.1 Entering & Exiting

Depending on how your system is installed and on the type of keypad, there are various ways to enter and exit Access Control doors:

- Present your Access Control card to the reader or the EVO641R or DGP2-641RB keypad. The system will verify that the card is allowed access according to its assigned Access Level and Schedule. If it is accepted, the system will unlock the door. The reader's light can be programmed by the installer to turn green or extinguish briefly to indicate that the door can be opened.
- When the motion detector detects movement (Request for Exit), it will unlock the door to permit passage from inside.
- Enter your user access code on the keypad and press **[ACC]**.
- If the Access Control door is on a "Door Unlocked Schedule", you may be able to open Access Control doors without using a user access code or an Access Control card. Depending on the door's programming, the door can remain unlocked during the entire programmed schedule or the door can unlock once a valid Access Control card is presented to the reader during the schedule and then will remain unlocked for the remainder of the schedule.



1 = EVO641R
2 = "Request for Exit" Motion Detector

8.2 Arming and Disarming with Card

LCD EVO641R / DGP2-641RB only

8.2.1 Arming with Card

- presented to a door during its assigned Schedule (refer to step 8 in section 7.5.1 on page 14).
- presented to a door within its assigned Access Level (refer to step 8 in section 7.5.1 on page 14).
- programmed to allow arming (options **[4]** and **[5]** in section 7.7 on page 15).
- assigned to all areas that are assigned to the Access Control door (refer to step 7 in section 7.5.1 on page 14), or assigned to at least one of the areas assigned to the Access Control door depending on how your installer has programmed the Access Control door.

LCD EVO641R / DGP2-641RB only

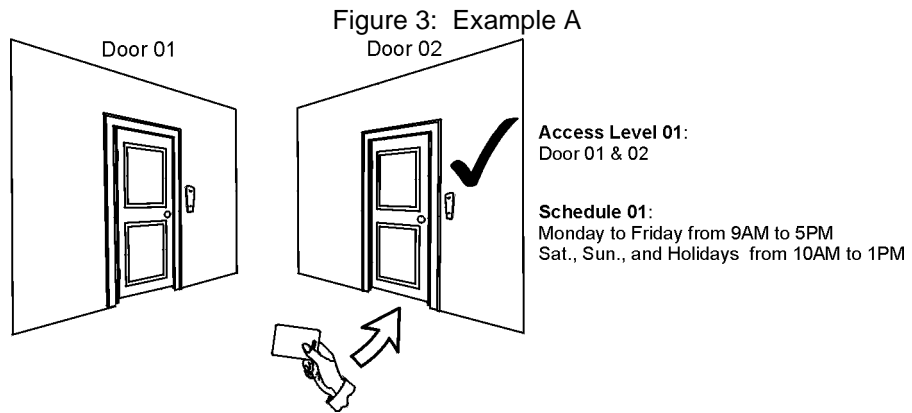
8.2.2 Disarming with Card

To disarm and unlock an Access Control door when the area assigned to it is armed, present your Access Control card to the reader or EVO641R / DGP2-641RB keypad (door). The Access Control card must be:

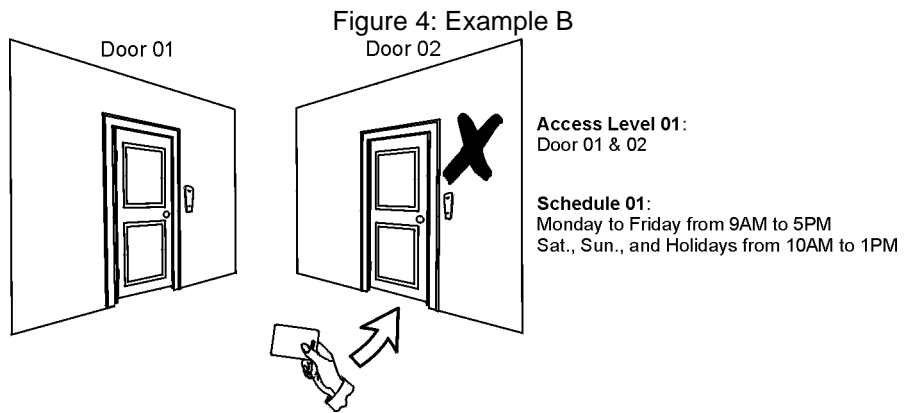
- presented to a door during its assigned Schedule (refer to step 8 in section 7.5.1 on page 14).
- presented to a door within its assigned Access Level (refer to step 8 in section 7.5.1 on page 14).
- programmed to allow disarming (option **[2]** in section 7.7 on page 15).
- assigned to all areas that are assigned to the Access Control door (refer to step 7 in section 7.5.1 on page 14), or assigned to at least one of the areas assigned to the Access Control door depending on how your installer has programmed the Access Control door.

8.3 How Access Control Works

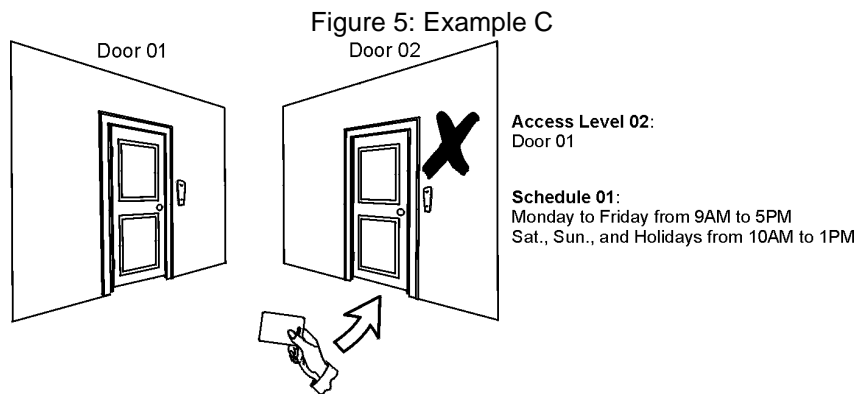
To illustrate how Access Control functions, we will use three simple Access Control System examples:



Bonnie's Access Control card is programmed with Access Level 01 and Schedule 01. If she presents her card to the reader or the EVO641R / DGP2-641RB keypad on Door 02 on Tuesday, August 3 at 3:00 p.m., she will gain access to the room.



If Bonnie presents her card to the reader or the EVO641R / DGP2-641RB keypad on Door 02 on Saturday or on a Holiday at 3:00 p.m., she will be denied access.



If we change Bonnie's Access Level to 02 and she presents her card to the reader or the EVO641R / DGP2-641RB keypad on Door 02 on Tuesday, August 3 at 3:00 p.m., she will be denied access.

9.0 Trouble Display

LCD LED

9.1 Trouble Display

If your system experiences any problems, *TROUBLE(S) (TRBL) TO VIEW* will appear on the screen, or the *TRBL* action light will illuminate. The Trouble Display will only display the troubles that occur in the area(s) to which the keypad has been assigned. Potential troubles have been sorted into eight groups. Only the troubles which are relevant to you are listed and described below. If a trouble that is not described or listed below appears, contact your installer. To view the Trouble Display:

1. Press the **[TRBL]** button.

The Group Heading with the trouble will appear on the screen. Press the **[▲]** and **[▼]** buttons to scroll between the Groups experiencing a trouble.

On the DGP2-648BL LED keypad, The *TRBL* action light will flash and the numerical light(s) representing group heading number(s) will illuminate.

2. Press the **[NUMBER]** of the Trouble you wish to view.



We strongly suggest that if any troubles occur, contact your installer immediately to have your system serviced.

9.1.1 Group 1: System

[1] AC Failure

The control panel has detected a power failure. This means that your system is running on the backup battery. If this trouble occurs when your establishment is not experiencing a power failure, call your installer for repairs.

[2] Battery Trouble

The backup battery is disconnected, needs to be recharged, or replaced.

[5] Bell Absent

The system has detected that the bell or siren is not connected.

9.1.2 Group 2: Communicator

[1] TLM1

The control panel is unable to access the main telephone line.

[2] to [5] Fail to Communicate (1 to 4)

The control panel tried all assigned telephone numbers and failed to contact the monitoring station.

[6] Fail to Communicate PC

The control panel is unable to communicate with the WinLoad software.

9.1.3 Group 5: Zone Tamper

The zone(s) that was tampered with will be displayed on the LCD screen.

9.1.4 Group 6: Zone Low Battery

If a wireless device's battery needs to be replaced, the zone that is assigned to the device will be displayed on the LCD screen.

9.1.5 Group 7: Zone Fault

A wireless device is no longer communicating with its receiver, or a connection or CleanMe™ trouble is occurring with your smoke detectors.

LCD

LED

9.1.6 Group 8: Clock Loss

The time and date have been reset to the default. This is the only trouble that we recommend that you correct. *CLOCK LOSS (8) TO SET* will appear on the LCD screen after you press the **[TRBL]** button or the **[⏻]** key. Refer to section 10.4 on page 21 to set the time and date.

9.2 Event Record Display

The Event Record Display will record the user-initiated actions that occurred in your system as well as any alarms or troubles (i.e. "Access Granted"). You will only be able to view the events that occurred in the area(s) assigned to your user access code.

-Only available on LCD keypads.

To view the Event Record:

1. Enter your **[ACCESS CODE]**.
2. Press the **[7]** button.
3. If you have access to more than one area, select the area(s) you wish to view.
4. Use the **[▲]** and **[▼]** buttons to scroll between the events.
5. Press the **[CLEAR]** button to exit.

Once you have entered Event Record Display mode, you can change the order that the Event Record screens appear by pressing the **[7]** button. If you already know the number of the event you want to view, press the **[MEM]** button after step 3 above, and then enter the event's number.

10.0 Additional Features

LCD LED

10.1 Programmable Outputs (PGMs)

Your system includes Programmable Outputs (PGMs) that can be programmed by your installer. A PGM triggers when a predetermined event or series of events occurs in your system. The PGMs can be programmed to reset smoke alarms, turn on light switches, open or close garage doors and much more. Ask your installer about this useful feature.

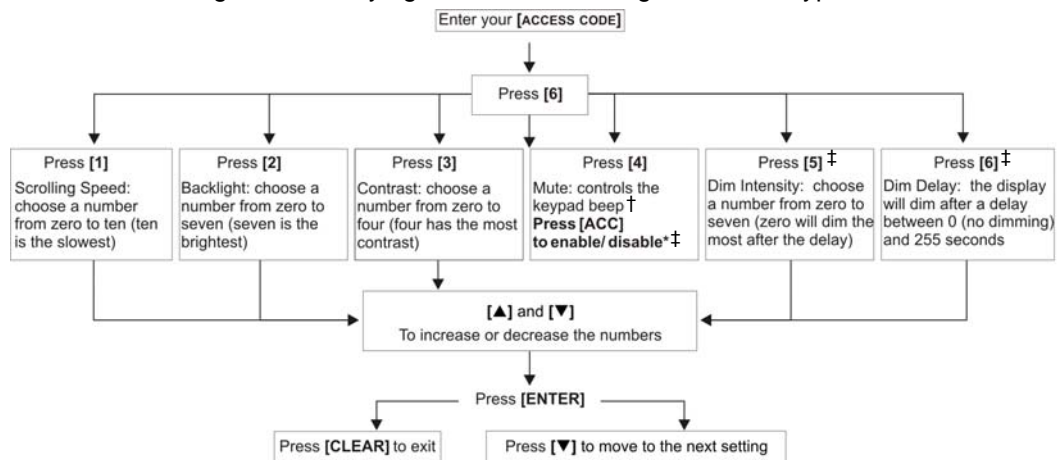
10.2 Keypad Settings

You can modify the keypad settings to suit your needs.

1. Scrolling Speed refers to the amount of time that a message will remain on the screen before moving to the next message.
2. Backlight refers to the illumination behind the buttons and LCD screen.
3. Contrast refers to how dark or pale characters will appear on the screen.

LCD

Figure 6: Modifying LCD screen settings on LCD Keypads



*This feature cannot be accessed via One-Touch Buttons (see section 5.6.2 on page 8).

†When keypad mute is enabled, only confirmation, rejection, and key-press beeps are audible.

‡EVO641 / EVO641R only

LED

10.3 Modifying illumination settings on the DGP2-648BL LED

To modify illumination settings:

1. Enter your **[ACCESS CODE]**. Your keypad will emit a Confirmation Beep. The *ACCESS* action light will flash.
2. Press the **[6]** key. Your keypad will emit a Confirmation Beep, the *Prg* action light will illuminate and the numerical light for the current setting will illuminate.
3. Use the **[▲]** and **[▼]** keys to increase or decrease the illumination. The range is between numerical light 1 to 8 (1 being the lowest and 8, the brightest).
4. Press the **[ENTER]** key to save and exit.

LCD

10.4 Setting Time & Date

To reset the time and date:

1. Enter your **[ACCESS CODE]** and press the **[TRBL]** button.
2. Press the **[8]** button.
3. To change the time, place the cursor under the number you want to change by using the **[▲]** button and enter the time according to a 24-hour clock (i.e. 9 a.m. is 09:00 and 9 p.m. is 21:00).
4. To change the date, place the cursor under the number you want to change and enter the correct date according to year/month/day.
5. Press the **[ENTER]** button to save and exit.

On the DGP2-648BL LED keypad, follow this procedure:

1. Enter your [ACCESS CODE] and press the [TRBL] button.
2. Press the [8] button.
3. Enter the hour and minutes according to the 24-hour clock (i.e. 9AM is 09:00 and 9PM is 21:00).
4. Enter the correct date according to yyyy/mm/dd.
5. Press [CLEAR].

10.5 Programming Chime Zones

You can program the keypad to emit a rapid, intermittent beep tone whenever designated zones are opened or only when opened between certain hours. These zones are referred to as Chime Zones. Your installer can also program your Chime zones to beep upon closure.

How do I program chime zones?

1. Enter your [ACCESS CODE].
2. Press the [9] key.
3. Press the [1] key to chime a zone. Enter the number corresponding to the zone to be chimed, or use the [▲] and [▼] buttons to scroll the list of zones. Press the [ACC] button to chime or unchime the zone that appears on the screen. Press [ENTER] to save.

OR

Press the [2] button to set the time period a chimed zone will beep. Enter the time that the chimed zone(s) will start beeping when opened (HH:MM). Enter the time that the chimed zone(s) will stop beeping when opened (HH:MM).

4. Press [CLEAR] to exit chime programming.

10.6 Panic Alarms

Your system can be programmed to send an alarm to your monitoring station to request help from the police, a medical facility, the fire department, or anyone you wish when you press a predetermined combination of buttons. To generate a panic alarm, simultaneously press and hold the button combinations displayed in Table 4 on page 22. Your installer can program the alarm to be either silent or audible.

Table 4: Panic Buttons

Panic Alarm Types	Buttons to be pressed and held simultaneously
Emergency Panic	Press & hold the [1] and [3] buttons
Auxiliary Panic	Press & hold the [4] and [6] buttons
Fire Panic	Press & hold the [7] and [9] buttons

10.7 Quick Function Buttons

You will only need to use the Quick Function Buttons upon your installer's or monitoring station's request. Only the System Master Code or user access codes with the Master feature enabled will be able to access these functions.

To access the Quick Function Buttons:

1. Enter your [ACCESS CODE]
2. Press the [0] button.
3. Press the:
 - [STAY] to **send** a test report to the monitoring station.
 - [FORCE] to **call** the WinLoad software.
 - [ARM] to **answer** the WinLoad software.
 - [DISARM] to **cancel** communication with the WinLoad software.

11.0 VDMP3 Plug-In Voice Dialer

The VDMP3 is a voice-assisted module that can be programmed to call up to 8 telephone numbers in the event of an alarm. You can also call the VDMP3 from an outside line, enabling you to arm or disarm the system as well as activate up to 8 PGMs.

11.1 Calling the VDMP3 (outside line)

Connected to an answering machine:

1. From an outside line, dial the telephone number to which the VDMP3 is connected.
2. When the line rings, hang up the telephone.
3. Dial the telephone number again within the time limit set by your installer.
4. When the VDMP3 answers the line, you are prompted to enter your access code.
5. Options are given to arm/disarm (1) and control features (PGMs) (2).

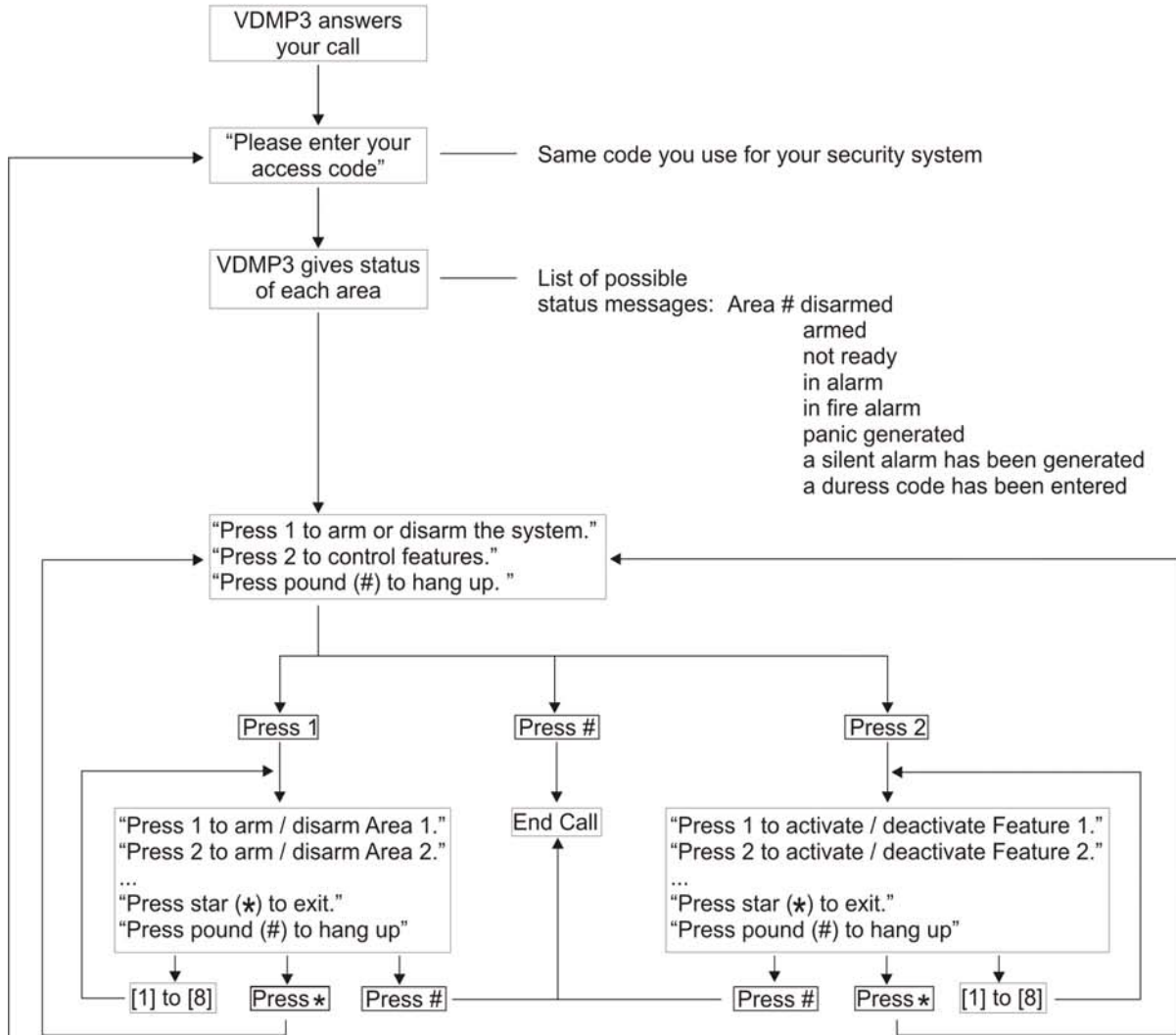
Not connected to an answering machine:

1. From an outside line, dial the telephone number to which the VDMP3 is connected.
2. When the VDMP3 answers the line, you are prompted to enter your access code.
3. Options are given to arm/disarm (1) and control features (PGMs) (2).

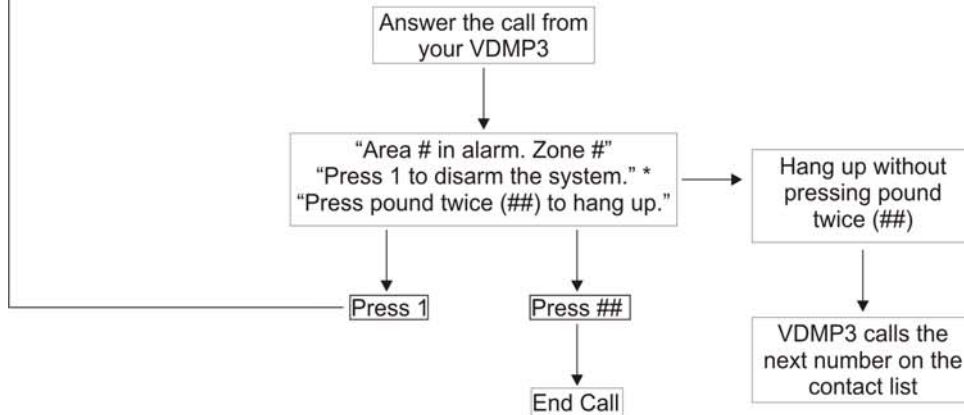
11.2 Receiving a Call From the VDMP3 (alarm in system)

When the VDMP3 calls because of an alarm in the system, the option is given to disarm the system or disconnect (##). If you hang up without disarming or disconnecting, the VDMP3 calls the next telephone number on its list (see *Telephone Numbers* in VDMP3 Setup Instructions).

Calling the VDMP3



Receiving a Call From the VDMP3



* If multiple areas are in alarm, the VDMP3 hangs up and calls back to report other alarms.

12.0 Testing and Maintenance

12.1 Burglar Alarm Testing

Two people are needed to complete this test. One person will watch the screen on the keypad while the other person walks around the protected areas and opens the zones (i.e. opens the doors and windows that are protected, walk in the path of the motion detectors, etc.). The screen will display the opened zones, but if a zone does not register, contact your installer.

12.2 Fire Alarm Testing

Do NOT use an open flame or burning materials to test your fire detection devices. Your installer will provide details on the best way to test your system.

12.3 System Maintenance

Under normal use your system requires no maintenance other than regular testing. We recommend that your installer change the battery every three years.

LCD LED

12.4 System Test

Speak to your installer before conducting a System Test since the system must be programmed to respond to the test instructions. It is normally recommended that you conduct the system test once a week, but contact your installer for instructions concerning your particular system.

To conduct the system test:

1. Call your monitoring station to advise them that you are testing your system.
2. Enter your **[ACCESS CODE]**.
3. Press the **[8]** button.

The system will test all its connections and can send a report to your monitoring station. If the system detects a problem, the Trouble Display will show on the screen (refer to section 9.0 on page 19). Call your installer for repairs if any troubles occur.

13.0 Fire and Burglar Alarms

LCD LED

13.1 Standard Fire Zone

During a fire alarm, the bell/siren emits an intermittent sound (BEEP-BEEP-BEEP) until silenced or reset. If the zone is a Standard Fire Zone, your system can immediately send an alert to your monitoring station.

To disarm a false alarm:

1. Enter your [ACCESS CODE] on the keypad.
2. Call your monitoring station quickly to advise them of the false alarm.



The Fire Zone may reset itself once the problem has cleared. If it does not, simultaneously press and hold the [CLEAR] and [ENTER] buttons for two seconds.

LCD LED

13.2 Delayed Fire Zone

If the zone is a Delayed Fire Zone, there is an automatic delay before your system contacts your monitoring station. Refer to Figure 7 on page 27 to prevent unnecessary reporting of false alarms.

If the fire alarm is accidentally triggered:

1. Press the [CLEAR] button within 30 seconds of the alarm.
2. Clear the problem from the area (i.e. clear the smoke from around the smoke detector).
3. If the problem remains after 90 seconds, the alarm will sound again. Press [CLEAR] again.
4. The system will delay reporting the alert for another 30 seconds.



If you are unable to cancel the false alarm, your system will send an alert. Call your monitoring station to advise them of the false alarm.



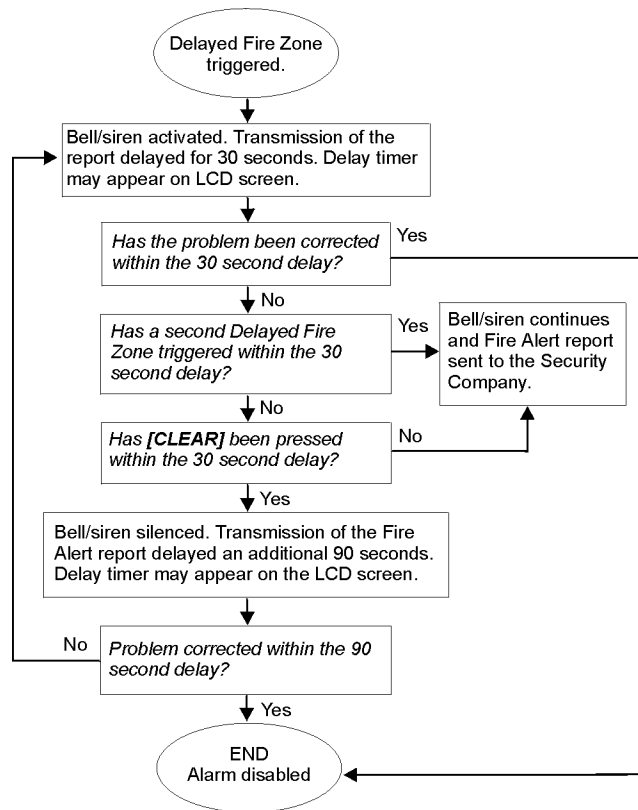
The Fire Zone may reset itself once the smoke has cleared. If it does not, simultaneously press and hold the [CLEAR] and [ENTER] buttons for two seconds or speak to your installer.

13.3 Fire Safety Tips

How should you prepare in case of a fire in your home or business?

- Remind everyone to escape first, and then call for help.
- Develop a fire escape plan and designate a meeting place outside.
- Practice the escape plan frequently.
- Plan two ways to escape from every room, if possible.
- Practice feeling the way out with eyes closed.
- Instruct everyone **never** to stand up during a fire, always crawl under the smoke and keep mouths covered.
- Instruct everyone **never** to return to a burning building for any reason; it may cost them their life.
- Check smoke alarms regularly. Working smoke alarms dramatically increase everyone's chances of surviving a fire.

Figure 7: Delayed Fire Zone



13.4 Minimizing Home Fire Hazards

How can you avoid the three most common causes of fires at home?

- Never leave cooking food unattended. It's the leading cause of fire injuries. Cooking fires often result from unattended cooking and human error, rather than mechanical failure.
- Stay alert when smoking. Careless smoking is the leading cause of fire deaths. Smoke detectors and smoulder-resistant bedding and upholstered furniture are significant fire deterrents.
- Maintain your heating system. Faulty heating systems are the second leading cause of residential fires.

13.5 Home Fire Warning System

Household fires are especially dangerous at night. Fires produce smoke and deadly gases that can overcome occupants while they sleep. To warn against fire, install smoke detectors outside each separate sleeping area in the immediate vicinity of the bedrooms and on each additional story of the family living unit, including basements.

13.6 Burglar Alarm

If your armed system is breached, the burglar alarm devices specific to your system will be triggered. The feedback will vary depending on the type of keypad used. If your keypad is in *Normal Mode*:

- *IN ALARM* will appear on LCD screen.
- Bell or siren may be activated.
- The keypad may beep. The *MEM* action light will illuminate.



In case of a burglar alarm, leave the premises and call the police station from a safe place.

Appendix 1: Hebrew Special Characters

Refer to the following tables when programming the user labels of a Hebrew LCD keypad. Instead of using Table 2 on page 12 and Table 3 on page 13, use Tables 9 and 10 below. Refer to section 7.3 on page 11 for information on programming user labels.

Table 5: Hebrew Keypad Letter Assignment

Key	Press key once	Press key twice	Press key three times
[1]	א	ב	ג
[2]	ד	ה	ו
[3]	ז	ח	ט
[4]	י	כ	ל
[5]	מ	נ	ס
[6]	ע	פ	צ
[7]	ק	ר	ש
[8]	ת		
[9]			

Table 6: Hebrew Special Characters Catalogue

032	048	064	080	096	112	160	176	192	208	224	240
	Ø	И	P	У	Р	Х	Г	Г.Т.	К	Ф	Ф
033	049	065	081	097	113	161	177	193	209	225	241
	!	1	A	Q	а	q	В	О	В	В	ב
034	050	066	082	098	114	162	178	194	210	226	242
	=	2	B	R	б	р	Г	В	Г	Г	ג
035	051	067	083	099	115	163	179	195	211	227	243
	#	3	C	S	с	с	ד	ד	ז	ז	ז
036	052	068	084	100	116	164	180	196	212	228	244
	φ	4	D	T	d	t	ה	ה	ה	ה	ה
037	053	069	085	101	117	165	181	197	213	229	245
	%	5	E	U	e	u	ו	ז	ח	ח	ח
038	054	070	086	102	118	166	182	198	214	230	246
	&	6	F	V	f	v	ז	ח	ח	ח	ח
039	055	071	087	103	119	167	183	199	215	231	247
	,	7	G	W	g	w	ח	ט	ט	ט	ט
040	056	072	088	104	120	168	184	200	216	232	248
	<	8	H	X	h	x	ט	י	י	י	י
041	057	073	089	105	121	169	185	201	217	233	249
	>	9	I	Y	i	y	י	כ	כ	כ	כ
042	058	074	090	106	122	170	186	202	218	234	250
	*	:	J	Z	j	z	כ	ל	ל	ל	ל
043	059	075	091	107	123	171	187	203	219	235	251
	+	Г	K	W	k	w	ל	מ	מ	מ	מ
044	060	076	092	108	124	172	188	204	220	236	252
	,	<	L	П	l	p	מ	נ	נ	נ	נ
045	061	077	093	109	125	173	189	205	221	237	253
	-	=	M	Ж	m	zh	נ	ס	ס	ס	ס
046	062	078	094	110	126	174	190	206	222	238	254
	□	>	N	Г	n	g	ס	ע	ע	ע	ע
047	063	079	095	111	127	175	191	207	223	239	255
	/	Д	O	Ф	o	f	ע	פ	פ	פ	פ

Appendix 2: Russian Special Characters

Refer to the following tables when programming the user labels of a Russian LCD keypad. Instead of using Table 2 on page 12 and Table 3 on page 13, use Tables 11 and 12 below. Refer to section 7.3 on page 11 for information on programming user labels.

Table 7: Russian Keypad Letter Assignment

Key	Press key once	Press key twice	Press key three times	Press key four times
[1]	А	Б	В	Г
[2]	Д	Е	Ё	Ж
[3]	З	И	Й	К
[4]	Л	М	Н	О
[5]	П	Р	С	Т
[6]	У	Ф	Х	Ц
[7]	Ч	Ш	Щ	Ъ
[8]	Ы	Ь	Э	Ю
[9]	Я			

Table 8: Russian Special Characters Catalogue

032	048	064	080	096	112	160	176	192	208	224	240	
	Ø	Ð	Р	’	Р	Б	Ю	Ч	.	Д	¼	
033	049	065	081	097	113	161	177	193	209	225	241	
	!	1	А	Q	а	q	Г	Я	Ш	ı	Ц	½
034	050	066	082	098	114	162	178	194	210	226	242	
	"	2	В	R	в	r	Ё	Б	Ь	ıı	Щ	¾
035	051	067	083	099	115	163	179	195	211	227	243	
	#	3	С	S	с	s	Ж	В	Ы	!!	Д	¾
036	052	068	084	100	116	164	180	196	212	228	244	
	\$	4	D	T	d	t	З	Г	Ь	ÿ	Ф	Æ
037	053	A069	085	101	117	165	181	197	213	229	245	
	%	5	E	U	e	u	И	ё	Э	Х	Ц	∴
038	054	070	086	102	118	166	182	198	214	230	246	
	&	6	F	V	f	v	Й	Ж	Ю	Х	Щ	℞
039	055	071	087	103	119	167	183	199	215	231	247	
	'	7	G	W	g	w	Л	Э	Я	ı	’	ƒ
040	056	072	088	104	120	168	184	200	216	232	248	
	<	8	H	X	h	x	П	И	<<	И	‡	
041	057	073	089	105	121	169	185	201	217	233	249	
)	9	I	Y	i	y	У	Й	>>	↑	℞	∴
042	058	074	090	106	122	170	186	202	218	234	250	
	*	:	J	Z	j	z	Ф	К	“	↓	É	‡
043	059	075	091	107	123	171	187	203	219	235	251	
	+	;	K	l	k	ı	Ч	Л	”	‡	ƒ	‡
044	060	076	092	108	124	172	188	204	220	236	252	
	,	<	L	\	ı	ı2	Ш	М	№	‡	ı	ƒ
045	061	077	093	109	125	173	189	205	221	237	253	
	-	=	M]	m	ı5	Ь	И	¿	‡	‡	∴
046	062	078	094	110	126	174	190	206	222	238	254	
	°	>	N	^	n	ı6	Ы	П	ƒ	ı	∴	ƒ
047	063	079	095	111	127	175	191	207	223	239	255	
	/	?	O	_	ı	ı7	Э	Т	ƒ	ı	ı	ı

Appendix 3: Greek Special Characters

Refer to the following tables when programming the user labels of a Greek LCD keypad. Instead of using Table 2 on page 12 and Table 3 on page 13, use Tables 13 and 14 below. Refer to section 7.3 on page 11 for information on programming user labels.

Table 9: Greek Keypad Letter Assignment

Key	Press key once	Press key twice	Press key three times
[1]	A	B	Γ
[2]	Δ	E	Z
[3]	H	Θ	I
[4]	K	Λ	M
[5]	N	Ξ	O
[6]	Π	P	Σ
[7]	T	Υ	Φ
[8]	X	Ψ	Ω

Table 10: Greek Special Characters Catalogue

016	032	048	064	080	096	112	128	144	160	176	192	208	224	240
±		∅	∂	ρ	`	ρ	ζ	ε	δ	·	Γ	Μ	β	τ
017	033	049	065	081	097	113	129	145	161	177	193	209	225	241
≡	!	1	Α	Q	α	α	ξ	η	ι	∴	J	†	Υ	υ
018	034	050	066	082	098	114	130	146	162	178	194	210	226	242
∇	"	2	Β	R	β	ρ	ε	ϕ	ο	◊	∞	§	δ	χ
019	035	051	067	083	099	115	131	147	163	179	195	211	227	243
∫	#	3	Γ	S	σ	σ	δ	ο	υ	·	∇	¶	Ε	ψ
020	036	052	068	084	100	116	132	148	164	180	196	212	228	244
∫	\$	4	Δ	T	δ	τ	ä	ö	φ	·	∇	Γ	ζ	ω
021	037	053	A069	085	101	117	133	149	165	181	197	213	229	245
∫	%	5	Ε	U	e	υ	ä	ö	φ	½	↑	Δ	η	¶
022	038	054	070	086	102	118	134	150	166	182	198	214	230	246
∫	&	6	F	V	f	υ	ä	ü	ψ	¼	↓	Θ	θ	¶
023	039	055	071	087	103	119	135	151	167	183	199	215	231	247
∫	'	7	G	W	g	ω	ζ	υ	ϕ	X	→	Λ	λ	¶
024	040	056	072	088	104	120	136	152	168	184	200	216	232	248
∫	<	8	H	X	h	x	è	ü	φ	÷	←	Ξ	K	¶
025	041	057	073	089	105	121	137	153	169	185	201	217	233	249
∫	>	9	I	Y	i	υ	è	ö	ι	≤	Γ	Π	λ	¶
026	042	058	074	090	106	122	138	154	170	186	202	218	234	250
≈	*	:	J	Z	j	z	è	ü	ϕ	≥	Γ	Σ	μ	F
027	043	059	075	091	107	123	139	155	171	187	203	219	235	251
∫	+	;	K	[k	ç	ì	ϕ	α	«	L	¶	υ	¶
028	044	060	076	092	108	124	140	156	172	188	204	220	236	252
=	,	<	L	\	l	l	î	z	ϕ	»	J	Φ	ξ	□
029	045	061	077	093	109	125	141	157	173	189	205	221	237	253
∫	-	=	M]	m	}	ì	ϕ	ο	±	·	Ψ	π	∫
030	046	062	078	094	110	126	142	158	174	190	206	222	238	254
∫	◊	>	N	^	n	˘	ä	ö	ϕ	∇	⊙	∫	ρ	∫
031	047	063	079	095	111	127	143	159	175	191	207	223	239	255
∫	/	?	O	_	o	Δ	δ	ç	ϕ	∫	⊙	α	σ	∫

Index

A

Access Codes	
<i>Deleting</i>	13
<i>Labelling</i>	11
<i>Programming</i>	13
<i>System Master</i>	11
<i>User</i>	11
Access Control	15
<i>Entering & Exiting</i>	17
Access Control User Options	
<i>Access Control</i>	15
<i>Add Tolerance Window to Schedule</i>	16
<i>Arming with Card</i>	16
<i>Can Disarm with Access Card</i>	15
<i>Card to Unlock and Code to Disarm</i>	16
<i>Code Follows Schedule</i>	16
<i>Extended Unlocked Period</i>	16
Add Tolerance Window to User Schedule	16
Alarm Memory Display	10
Alarm, Testing	25
Area Access, in User Options	15
Area Display	6
Arming	
<i>Automatic Arming</i>	9
<i>Force Arming</i>	7
<i>Instant Arming</i>	7
<i>Keyswitch Arming</i>	8
<i>Regular Arming</i>	7
<i>Stay Arming</i>	7
<i>with Card</i>	17
Auto-Arming	
<i>No Movement Auto-Arming</i>	9
<i>Timed Auto-Arming</i>	9

B

Basic Operation	3
Battery	
<i>Disconnected</i>	19
<i>Low, in a Zone</i>	19
Beep Tones	
<i>Confirmation beep</i>	4
<i>in Opened or Closed Zones, see Chime Zones</i>	
<i>Rejection beep</i>	4
Bell Disconnected	19
Burglar Alarms	27
Buttons	
<i>One-Touch</i>	8
<i>Quick Function</i>	22
Bypass	
<i>Bypass Recall</i>	8
<i>Programming</i>	7

C

Card, Access Control	
<i>Arming with</i>	17
<i>Disarming with</i>	17
Characters, Special	13
Chime Zones	22
Clock, Set Time and Date	21
Code Follows Schedule	16

Copy User Options	11
-------------------	----

D

Date, Set	21
Deactivating a Security System	10
Delay Timer	
<i>Entry</i>	10
<i>Exit</i>	7
Delayed Fire Zone	26
Deleting User Access Codes	13
DGP2-648BL LED Keypad Overview	3
Disarming	
<i>Armed System</i>	10
<i>with Card</i>	17
Display	
<i>Alarms In Memory</i>	10
<i>User Actions in Memory</i>	20
Duress, in User Options	15

E

Emergency Buttons	22
Entering and Exiting, Access Control Doors	17
Entry Delay Timer	10
Erasing User Access Codes	13
Event Record Display	20
Exit Delay Timer	7
Extended Unlocked Period	16

F

Fire	
<i>Delayed Fire Zone</i>	26
<i>Minimizing Home Fire Hazards</i>	27
<i>Safety Tips</i>	26
<i>Standard Fire Zone</i>	26
<i>Warning System</i>	27
Fire Alarm, Testing	25
Force Arming	7

G

Greek Special Characters	30
--------------------------	----

H

Hebrew Special Characters	28
---------------------------	----

I

Ignoring Zones when Arming, see Bypass Programming	
Instant Arming	7

K

Keypad, LCD	
<i>Buttons</i>	3
<i>Letter Assignment</i>	12
<i>Lights</i>	3
<i>Messages</i>	3
<i>Settings</i>	21
Keyswitch Arming	8

M	
Master Code	11
Master Feature, in User Options	15
MG-REM2 Feedback	5
N	
No Movement Auto-Arming	9
O	
One Touch Button for the DGP-641BL/RB and the DGP-648	8
One-Touch buttons	8
Outputs, Programmable (PGM)	21
P	
Panic Alarms	22
Power Failure, see Trouble	
Programmable Outputs (PGM)	21
Programming	
<i>Chime Zones</i>	22
<i>User Access Codes</i>	13–15
Q	
Quick Function Buttons	
<i>Answer Winload Software</i>	22
<i>Call Winload Software</i>	22
<i>Cancel Communication with Winload Software</i>	22
<i>Send Test Report</i>	22
R	
Recall, Bypassed Zones	8
Regular Arming	7
Request for Exit	17
Russian Special Characters	29
S	
Safety Tips, Fire	26
Schedule	
<i>Code Follows</i>	16
Schedule Tolerance Window, see Add Tolerance to User Schedule	
Siren Disconnected	19
Special Characters	13
Special Characters, Greek	30
Special Characters, Hebrew	28
Special Characters, Russian	29
Special Function Keys	12
Standard Fire Zone	26
Stay Arming	7
System Master Code	11
System Test	25
T	
Tampered Zones	19
Testing and Maintenance	
<i>Burglar Alarm</i>	25
<i>Fire Alarm</i>	25
<i>System Maintenance</i>	25
<i>System Test</i>	25
Time, Set	21
Timed Auto-Arming	9

Timer	
<i>Entry Delay</i>	10
<i>Exit Delay</i>	7
Trouble	
<i>AC Failure</i>	19
<i>Battery</i>	19
<i>Bell/Siren Disconnected</i>	19
<i>Clock</i>	20
<i>Communicator</i>	19
<i>Fail to Communicate</i>	19
<i>Fail to Communicate PC</i>	19
<i>Low Battery, Zone</i>	19
<i>System</i>	19
<i>TLM1</i>	19
<i>Zone Fault</i>	19
<i>Zone Tampering</i>	19
U	
Unlocked Period, Extended	16
User Labels	11
User Options	
<i>Access Control, see Access Control User Options</i>	
<i>Area Access</i>	15
<i>Arm Only</i>	15
<i>Bypass</i>	15
<i>Copy</i>	11
<i>Duress</i>	15
<i>Force Arm</i>	15
<i>Master Feature</i>	15
<i>Programming</i>	15
<i>Stay & Instant Arm</i>	15
User Settings	14
V	
VDMP3 Plug-In Voice Dialer	23
Viewing	
<i>Alarms In Memory</i>	10
<i>User Actions in Memory</i>	20

Warranty

For complete warranty information on this product please refer to the Limited Warranty Statement found on the website www.paradox.com/terms. Your use of the Paradox product signifies your acceptance of all warranty terms and conditions.

BEWARE: Dealers, installers and/or others selling the product are not authorized to modify this warranty or make additional warranties that are binding on the Seller.

© 2002-2007 Paradox Security Systems Ltd. All rights reserved. Specifications may change without prior notice. One or more of the following US patents may apply: 6215399, 6111256, 5751803, 5721542, 5287111, 5119069, 5077549, 5920259, 5886632. Canadian and international patents may also apply.

Digiplex, InTouch, WinLoad and NEware are trademarks or registered trademarks of Paradox Security Systems Ltd. or its affiliates in Canada, the United States and/or other countries.

Limitations of Alarm Systems

We strongly advise that you review and take into consideration the "Limitations of Alarm Systems" document available on our website at <http://paradox.com/Terms/>.

Warning for Connections to Non-Traditional Telephony (eg. VoIP)

Paradox alarm equipment was designed to work effectively around traditional telephone systems. For those customers who are using a Paradox alarm panel connected to a non-traditional telephone system, such as "Voice Over Internet Protocol" (VoIP) that converts the voice signal from your telephone to a digital signal traveling over the Internet, you should be aware that your alarm system may not function as effectively as with traditional telephone systems.

For example, if your VoIP equipment has no battery back-up, during a power failure your system's ability to transmit signals to the central station may be compromised. Or, if your VoIP connection becomes disabled, your telephone line monitoring feature may also be compromised. Other concerns would include, without limitation, Internet connection failures which may be more frequent than regular telephone line outages.

We therefore strongly recommend that you discuss these and other limitations involved with operating an alarm system on a VoIP or other non-traditional telephone system with your installation company. They should be able to offer or recommend measures to reduce the risks involved and give you a better understanding.



For technical support in Canada or the U.S., call 1-800-791-1919, Monday to Friday from 8:00 a.m. to 8:00 p.m. EST.
For technical support outside Canada and the U.S., call 00-1-450-491-7444, Monday to Friday from 8:00 a.m. to 8:00 p.m. EST.
Please feel free to visit our website at www.paradox.com.

P ▲ **R** ▲ **D** **O** **X**[®]
S E C U R I T Y S Y S T E M S

Printed In Canada - 11/2007

paradox.com

EVO-EU02